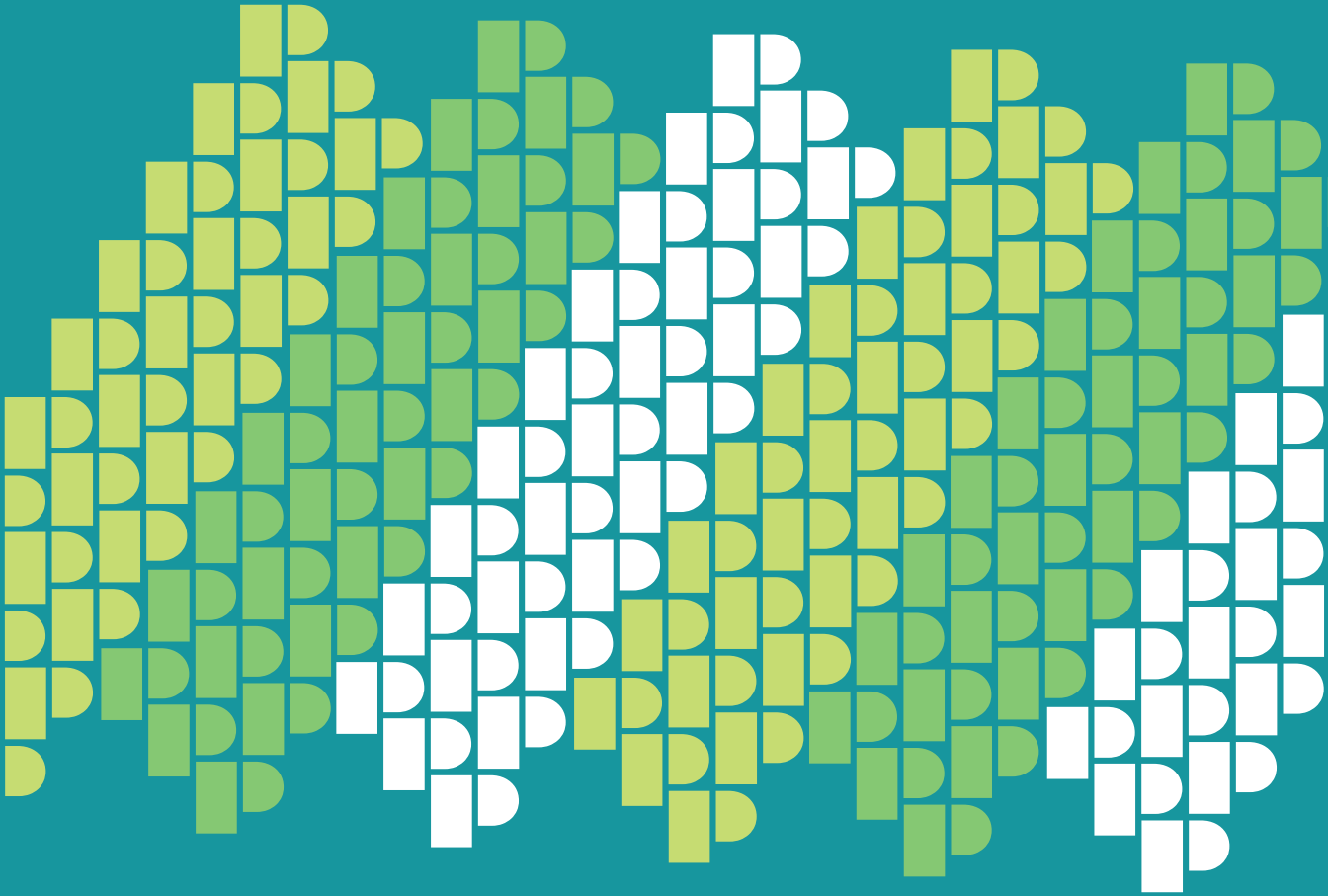


People
Place
Possibility



A I B C

ARCHITECTURAL INSTITUTE OF BRITISH COLUMBIA

CONFERENCE 2026

Vancouver, BC | May 25–27, 2026

Program

People Place Possibility

These three pillars offer a powerful lens for thinking critically and reflecting on architectural practice in an increasingly complex, interconnected, and technology-driven world. What does it mean to design with a sense of responsibility to both community and context? How does architecture stay open to possibility while remaining grounded in real needs, requirements, and realities?

AIBC Conference 2026 will explore the theme People / Place / Possibility, and examine how architectural practice is influenced by the people and communities we serve, the places and environments we inhabit, and the futures we strive to create. We invite you to bring your own voice to the conference, engage with new ideas, and discover where you can be both challenged and inspired.

OPENING KEYNOTE & MOVIE NIGHT RECEPTIONS

A chance to connect, engage, and mingle with your colleagues to kick-off conference on Monday evening before the opening Keynote presentation, as well as on Tuesday evening for Movie Night. Grab a bag of popcorn or try a selection of hors d'oeuvres that will be served throughout the Networking and Exhibitor Area.

Ocean Foyer (level 2)

NETWORKING AND EXHIBITOR AREA

Take a break in the Networking and Exhibitor Area! Catch up with colleagues, reflect on your new learnings, and fuel up for the next session. Connect with on-site exhibitors and check out the UBC SALA and BCIT student exhibits.

Open hours:

Monday 5:30 – 7 p.m.

Tuesday 10 a.m. – 6:30 p.m.

Wednesday 10 a.m. – 4 p.m.

Ocean Foyer (level 2)

AIBC HUB

Your one-stop-shop for all things AIBC. Our information booth is a centralized hub by the stairs leading up to level 3, where you can pick up your name badge, get all your conference related questions answered, and talk to AIBC staff about programs, services, and volunteer opportunities.

MEALS

Breakfast + Lunch: will be served on level 3, in the Summit Foyer

Outside of Room 301–305

Breaks: light snacks and refreshments served throughout the Networking and Exhibitor Area.

Ocean Foyer (level 2)

WIFI

Network name: AIBC2026

Password: Conference2026

THANK YOU

The AIBC would like to extend a special thank you to the members of the AIBC Conference Professional Development Advisory Group. These dedicated volunteers and AIBC staff have spent many hours putting together the PD program. A very big thank you!

Sima Azargoon
Architect AIBC

Himanshu Chopra
Architect AIBC

Tijana Corluka
Architect AIBC

Wayne DeAngelis
Architect AIBC

Joceline Kuch
Architect AIBC

Luciano Siffredi
Architect AIBC

Ji Song Sun
Intern Architect AIBC

Alexandra Kokol
AIBC Professional
Services Manager

Jaishree Sundar
AIBC Professional
Services Lead

Monday

May 25 Schedule

9:00 am



Virtual Session 1

Designing with People:

How Design Responds to Communities and Context

10:00 am

Break

10:30 am



Virtual Session 2

Who is this for? Designing with People, for Place, toward Possibility

11:30 am

Lunch

12:30 pm



Virtual Session 3

Behind the Curtain:

A Deep Dive into the AIBC Investigation Committee

1:30 pm

Break

2:00 pm



Virtual Session 4

The Chief Leonard George Building

3:00 pm

Virtual programming concludes

5:30 pm

In-person conference begins

OPENING RECEPTION

Vancouver Convention Centre West, Ocean Foyer (level 2)

7:00 pm

OPENING KEYNOTE

Adapting in Context

Room 301-305

8:30 pm

Sessions and speakers are subject to change. For the most up-to-date information, please visit aibc.ca.

VIRTUAL PROGRAMMING

Four virtual sessions are taking place on the first day of conference: attend from anywhere that has a stable internet connection.



Designing with People: How Design Responds to Communities and Context

Frans De Witte Architect (Netherlands)

1 Core LU



Who Is This For? Designing with People, for Place, toward Possibility

Darryl Condon Architect AIBC, AAA, SAA,
OAA, NLAA, AIA, RIBA, FRAIC, DDes

1 Core LU



Behind the Curtain: A Deep Dive into the AIBC Investigation Committee

Byung-Hee Kang Architect AIBC;
Robyn Fenton Architect AIBC; **Scott Kemp**
Architect AIBC; **Thomas Lutes** Barrister &
Solicitor, Chief Regulatory Officer, General
Counsel, AIBC

1 Core LU



The Chief Leonard George Building

Achim Charisius Architect AIBC, LEED
AP BD+C, CPHD, MRAIC, ETHZ; **Brenda
Knights**; **Michael Wilkinson**; **Sherman Wai**

1 Core LU

IN-PERSON PROGRAMMING

OPENING KEYNOTE RECEPTION

5:30 – 7 p.m.

Join us for the Opening Keynote Reception on Monday evening: catch up, mingle, and network with your fellow Conference 2026 attendees, while enjoying a selection of hors d'oeuvres.

Ocean Foyer (level 2)

OPENING KEYNOTE: ADAPTING IN CONTEXT

Michelle Delk FASLA

7 – 8:30 p.m.

Adaptive transformations are a means of revitalizing not only buildings, but entire project sites. Before proposing solutions, however, one needs to ask the right questions. In this presentation, Michelle Delk will share how Snøhetta brings together perspectives from various design disciplines, and collaborates with others, to shape their work. Examples from both her teaching and professional experience that explore adaptive transformations of complex sites across North America will be shared. A detailed walk-through of the Theodore Roosevelt Presidential Library project will provide a look at how projects can honour the past while preparing for a resilient, inclusive future. Attendees will learn how bold collaboration, ecological considerations, and narrative-driven planning can create civic spaces that inspire, educate, and endure.

1.5 Core LUs

Room 301–305

Tuesday

May 26 Schedule

7:30 am	<i>Breakfast</i>		
8:45 am	PLENARY Architecture for Housing the 99% Room 301-305		
10:00 am	<i>Break</i>		
10:30 am	The Butterfly + First Baptist Church Complex: Building Connection in a Vertical City Room 223–224	The 2025 Vancouver Building By-law Room 221–222	Designing Moody Centre Through Policy, Placemaking, and Public Engagement Room 220
11:30 am	<i>Lunch</i>		
1:00 pm	From Mill to Momentum: Regenerating Kelowna's Waterfront for a Low-Carbon Future Room 221–222	A Shortcut to Understanding Your Firm's Financials Room 220	Indigenous Engagement Influences in Student Housing Room 223–224
2:00 pm	<i>Break</i>		
2:30 pm	Designing with Lived Experiences: Lessons Learned in London Room 220	What Can We Do with a Retired Concrete Tower? Room 223–224	Romantic Pragmatism Room 221–222
3:30 pm	<i>Break</i>		
4:00 pm	Architecture of Care: Where Learning and Nurturing Intersect Room 221–222	Advisory Design Panels Today: Perspectives from Practice Room 223–224	BAAKFIL: Respectful and Affordable Densification Room 220
5:00 pm	RECEPTION AND NETWORKING Ocean Foyer (level 2)		
6:30 pm	MOVIE NIGHT <i>Building on the Edge</i> Room 301-305		
8:00 pm			

Networking and Exhibitor Area open

Tuesday

May 26 Events



NETWORKING AND EXHIBITOR AREA

10 a.m. – 6:30 p.m.

The Networking and Exhibitor Area is where you can take a break, spend time with colleagues, reflect on your learnings, and fuel up for the next session. Connect with on-site exhibitors and check out the exhibits from UBC SALA and BCIT students.

Ocean Foyer (level 2)

PLENARY PRESENTATION: ARCHITECTURE FOR HOUSING THE 99%

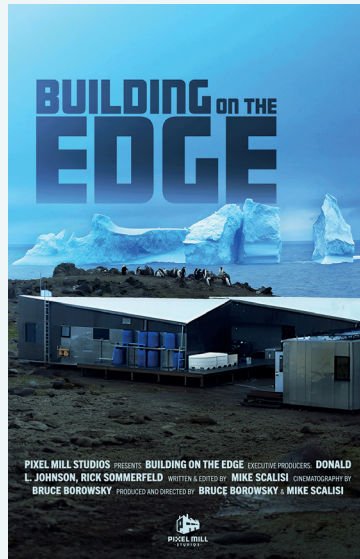
Johanna Hurme Architect AIBC, AAA, SAA, MAA, OAA, NSAA, LEED AP, BED, FRAIC

8:45 – 10 a.m.

In this session, Johanna Hurme shares lessons from 5468796 Architecture's two decades of hands-on housing work and the practice's research platform. Drawing from built work, housing prototypes, and ongoing research, the session explores the architectural strategies, design decisions, and delivery approaches available to architects working in mid-scale multi-family housing. The session will examine how ambitious, high-quality spaces and places can still be realized within current economic constraints, evolving social needs, and complex political and regulatory frameworks, and will position architects as active agents in shaping more equitable, livable, and durable housing outcomes.

1 Core LU

Room 301–305



MOVIE NIGHT: BUILDING ON THE EDGE

6:30 – 8 p.m.

Over the course of two years, a group of graduate students from the University of Colorado Denver and their professor, Rick Sommerfeld, embarked on a journey that tested their skills, endurance, and teamwork. They set out to design and construct a new cutting-edge research station for a small group of scientists studying penguins and seals in one of the harshest environments on the planet, Antarctica.

The students must problem solve how to design and build a shelter that stands up against the high winds, rain, and snow that constantly besiege the tiny island on the northern tip of Antarctica. Just getting all the material to the remote island proves to be a daunting task as they must cross one of the most dangerous bodies of water on Earth, the Drake Passage. The extreme environments, pristine landscapes, and abundance of wildlife set up the conditions for the adventure of a lifetime for these students and alumni.

Produced & Directed by: **Bruce Borowsky and Mike Scalisi**

1.5 Non-Core LUs

Room 301–305

May 26 Sessions

The Butterfly + First Baptist Church Complex: Building Connection in a Vertical City

Venelin Kokalov Architect AIBC, OAA, AAA, SAA, MRAIC, NCARB, AIA

The Butterfly + First Baptist Church Complex explores the potential of architecture to strengthen connections to community, city, and nature. The 605,000 square-foot project combines a 57-storey residential tower, a mid-rise social housing building, and the restoration of a Gothic Revival landmark. The Butterfly project demonstrates how heritage preservation, housing diversity, and environmental integration can coexist.

1 Core LU

Room 223–224

From Mill to Momentum: Regenerating Kelowna's Waterfront for a Low-Carbon Future

Audrey Girard Urban Designer, OUQ, ICU; **Grace Coulter Sherlock** Architect AIBC, AAA, SAA, MAA, OAA, MRAIC; **Mark Marshall**

The Kelowna Mill Site reimagines 90 years of industrial heritage into a vibrant, mixed-use community. Dive into practical frameworks for balancing heritage and natural preservation with economic viability, leveraging British Columbia's timber industry for construction innovation, future-proofing infrastructure, and designing human-scaled experiences.

1 Core LU

Room 221–222

The 2025 Vancouver Building By-law

Kevin Lau P.Eng., CP

This presentation provides a general overview of key variations between the 2025 Vancouver Building By-law (VBBL) and the 2024 BC Building Code, with a focus on adaptable housing requirements and upgrade requirements to existing buildings.

1 Core LU

Room 221–222

A Shortcut to Understanding Your Firm's Financials

Rick Linley FRAIC, LEED AP

Business acuity requires a clear understanding of firm financials. This session presents a conceptual model for assessing and improving the fiscal health of architecture firms, covering seven key indicators and infographics to help visualize overall strength and compare fiscal performance against design industry benchmarks.

1 Core LU

Room 220

Designing Moody Centre Through Policy, Placemaking, and Public Engagement

Luciano Siffredi Architect AIBC, CPAU; **Ryan Bragg** Architect AIBC, MAA, FRAIC, LEED AP BD+C

Explore how the Moody Centre Transit-Oriented Area project transforms underutilized transit infrastructure into a vibrant cultural precinct reinforcing Port Moody's identity as the "City of the Arts." Attendees will hear about how to lead multi-stakeholder planning processes, navigate policy shifts, and shape resilient, context-responsive urban environments.

1 Core LU

Room 220

Indigenous Engagement Influences in Student Housing

Kelly Shopland; **Matthew Emerson** Architect AIBC; **Mathieu Grady**

This presentation traces the 10-year journey from engagement to realization of the first student housing project at North Island College in Comox Valley. Working with the K'ómoks First Nation, the team embedded cultural history, architecture vernacular, gathering traditions, and art into the building's design.

1 Core LU

Room 223–224

Designing with Lived Experiences: Lessons Learned in London

Carly Dickson Intern Architect AIBC, RHFAC, NRAC

Design codes and standards establish baselines for access and inclusion, but often lack the nuance and contextual depth needed to serve diverse communities. This presentation will draw on projects from London, highlighting how research and meaningful engagement with people who have lived experiences can generate more inclusive and responsive design outcomes.

1 Core LU

Room 220

What Can We Do with a Retired Concrete Tower?

Aik Ablimit Architect AIBC, AIA, NCARB, CPHD, LEED AP BD+C, RELI AP; **Harrison Glotman** P.Eng.; **JS Tessier** P.Eng.

As many mid-20th century concrete towers face demolition, this session presents an alternative: the adaptive reuse of a 1980s, 17-storey concrete tower. The project introduces a bold intervention of an 11-storey hybrid mass timber and steel addition. The project demonstrates how aging towers can be reimaged to meet contemporary and social goals, and adaptive reuse as a powerful tool for sustainable urban transformation.

1 Core LU

Room 223–224

Romantic Pragmatism

Bo Helliwell Architect AIBC, FRAIC

In 1983, Architectural Review published an issue entitled “Romantic Pragmatism,” highlighting designers who generated humane architecture while drawing on the rational disciplines of Modernism. This session examines the principles of Romantic Pragmatism, and selected projects which illustrate how a values-based design approach can balance poetic expression with technical rigor.

1 Core LU

Room 221–222

Architecture of Care: Where Learning and Nurturing Intersect

Brad Martin; **Brian Wakelin** Architect AIBC, FRAIC, LEED AP; **Sara Sutherland**; **Sasha McWilliam** Architect AIBC

Drawing from Capilano University’s Fulmer Family Centre for Childhood Studies, this panel discussion will examine how elements such as natural light, connection to nature, flexible learning zones, and acoustics impact both child development and educator well-being. This project demonstrates how thoughtful design can bridge education, research, and community to create spaces that teach, nurture, and inspire.

1 Core LU

Room 221–222

Advisory Design Panels Today: Perspectives from Practice

Ann McLean Architect AIBC; **Kate Busby** Architect AIBC; **Marianne Amodio** Architect AIBC; **Nathaniel Funk**; **Stuart Rothnie** Architect AIBC

Learn about Advisory Design Panels (ADPs) from representatives involved throughout the process. The discussion will focus on how ADPs can remain relevant, fair, and effective, as well as share best practices, review current challenges and opportunities, and provide practical guidance for both applicants and panelists.

1 Core LU

Room 223–224

BAAKFIL: Respectful and Affordable Densification

Barry Johns Architect (Retired) AAA, DDes, FRAIC, (HON) FAIA, RCA

“BAAKFIL” is an acronym for “Back Alley Advantage, Kinship, Family & Integrated Living”. This new business model and design approach to infill respects mature neighbourhoods while preserving existing housing stock to add gentle density to a site. The presentation explores ideas about making cities, density, preserving communities, and addressing the affordable housing crisis at the same time.

1 Core LU

Room 220

Wednesday

May 27 Schedule

7:30 am	<i>Breakfast</i>		
8:45 am	PLENARY Architecture Through the Lens of Two Row Thinking Room 301-305		
10:00 am	<i>Break</i>		
10:30 am	Collaborative Transformations in the Design and Construction Industry Room 221-222	Affordable Belonging: Housing as a Cure for Isolation Room 220	837 Beatty Street: Heritage Rehabilitation and Contextual Addition Using Hybrid Mass Timber Room 223-224
11:30 am	<i>Lunch</i>		
1:00 pm	Component Based Architecture: A Field Guide Room 221-222	Bond Tower: A New Model for Affordable Timber Housing Room 220	Climate Responsive Architecture for a Changing World Room 223-224
2:00 pm	<i>Break</i>		
2:30 pm	Single Egress Buildings: The Key to the Missing Middle Room 223-224	Evolving Project Delivery Models for Community-Centered Architecture Room 220	Cultural Finds: Explorations in Public Architecture Room 221-222
3:30 pm	<i>Break</i>		
4:00 pm	CLOSING KEYNOTE (RPM): Resistance, Play, Misbehaviour Room 301-305		
5:00 pm			

Networking and Exhibitor Area open

Wednesday



May 27 Events

NETWORKING AND EXHIBITION AREA

10 a.m. – 4 p.m.

The Networking and Exhibition Area is where you can take a break, catch up with colleagues, reflect on your learnings, and fuel up for the next session. Connect with on-site exhibitors and check out the exhibits from UBC SALA and BCIT students.

Ocean Foyer (level 2)

PLENARY PRESENTATION: ARCHITECTURE THROUGH THE LENS OF TWO ROW THINKING

Matthew Hickey Architect AIBC, AAA, OAA

8:45 – 10 a.m.

This presentation explores how architectural practice can be reframed through the lens of Two Row thinking: an Indigenous framework rooted in respect, reciprocity, and parallel ways of knowing. Using the triad of people, place, and possibility, the presentation examines how architects can engage more meaningfully with Indigenous communities, lands, and knowledge systems, while maintaining professional accountability to contemporary design, regulation, and practice. Rather than positioning Indigenous and Western architectural paradigms in opposition, Two Row thinking offers a model of coexistence: distinct yet aligned, independent yet relational. Through built examples, process narratives, and reflective practice, the presentation demonstrates how this approach can inform community engagement, site-responsive design, and ethical decision-making. The intent is to move beyond symbolic inclusion toward practical, actionable strategies that support reconciliation, cultural continuity, and resilient place-making within the architectural profession. This session is particularly relevant to architects navigating projects on Indigenous lands, working with diverse communities, or seeking to embed reconciliation principles into everyday practice.

1 Core LU

Room 301–305

CLOSING KEYNOTE: (RPM): RESISTANCE, PLAY, MISBEHAVIOUR

Alex Josephson OAA, MRAIC

4 – 5 p.m.

PARTISANS is an award-winning Toronto-based architecture studio that specializes in the integration of design and technology, invention and programming, culture and creative services. This presentation tells the story of the firm—how they started and how a group of young architects fought adversity, a conservative culture, and made the improbable possible. This session surveys many of PARTISANS' key projects leading up to a focus on three scales: resistance (the book "Rise and Sprawl: The Condominiumization of Toronto"); play (55 Yonge Street); and misbehaviour (the RBC Amphitheatre). The firm aspires to realise better cities by innovating on the frontlines of ideas, culture, forms, materials, typologies, computational tools, and AI. The presentation aims to inspire Architects and firms to challenge convention, embrace risk, and pursue ambitious design thinking in their own practices.

1 Core LU

Room 301–305

May 27 Sessions

Collaborative Transformations in the Design and Construction Industry

Craig Webber Architect AIBC, AAA, SAA, OAA, NSAA, FRAIC, REFP; **Mark Popel** Intern Architect, AAA, RHFAC

This session will challenge attendees to see collaboration between design and construction as the pilot project to unlock transformational industry innovation. Explore how collaboration, parametric design, and rapidly evolving technology can lead to greater efficiency, address supply chain volatility, attract and retain talent, and reimagine how we create space.

1 Core LU

Room 221-222

Affordable Belonging: Housing as a Cure for Isolation

Amir Mohtasebi Architect AIBC, RHF Accessibility Professional Associate; **John Wall** Architect AIBC, FRAIC, LEED AP

Loneliness is a pressing public health concern that frays the social fabric. This presentation will discuss 1010 Expo Boulevard and Vienna House, two family-focused, affordable social housing developments, drawing attention to the design features and processes that support social resilience, build community cohesion, and give greater dimension and meaning to residents' lives.

1 Core LU

Room 220

837 Beatty Street: Heritage Rehabilitation and Contextual Addition Using Hybrid Mass Timber

Bryan Beca Architect AIBC, PMP, CPHD, WELL AP; **Rocio Huertas Garcia**

This session explores the adaptive reuse and expansion of 837 Beatty Street. The design responds to its history, urban context, and the cultural needs of today's workplace through a whole-building preservation and rehabilitation strategy achieved with mass timber, strategic deconstruction, prefabrication, virtual design coordination, and collaboration.

1 Core LU

Room 223-224

Component Based Architecture: A Field Guide

Michael Leckie Architect AIBC

In 2019, Leckie Studio Architecture + Design Inc. presented the Great Lakes Cabin, a 'kit-of-parts' cabin manufactured in British Columbia that was shipped across the country and assembled in 72 hours. It was the original prototype cabin for The Backcountry Hut Company. This session will explore component-based architectural systems—opportunities, constraints, and lessons learned.

1 Core LU

Room 221-222

Bond Tower: A New Model for Affordable Timber Housing

Sasa Radulovic Architect AIBC, MAA, OAA, SAA, AAA, NSAA, FRAIC, LEED AP

Bond Tower is a seven-storey mixed-use affordable housing project for newcomers to Winnipeg, designed as a prototype for mass timber urban infill housing. By employing nail-laminated timber as its primary structural system, the project demonstrates how architects can align technological, social, and policy innovation to integrate affordable, low-carbon solutions.

1 Core LU

Room 220

Climate Responsive Architecture for a Changing World

Eric Campbell P.Eng.; **Greg Boothroyd** Architect AIBC, FRAIC; **Sean Casey** IES

This presentation will highlight the value of a passive-first approach through the design of the BCIT Concert Properties Centre for Trades and Technology. It will explore the collaborative process between architect and engineer, as well as share insights into the limitations of relying solely on whole-building energy models for major performance decisions in the context of occupant comfort and resilient design.

1 Core LU

Room 223–224

Cultural Finds: Explorations in Public Architecture

Craig Duffield Architect AIBC, FRAIC, LEED AP

Designing with an understanding of culture and its place can serve to make architecture more meaningful to its users. This session will look at the design process and solutions for several public buildings, including the Northern Secwepemc Cultural Centre. The project proposes an achievable, flexible model for Indigenous cultural centres, rooted in connection to the land, under the direction of the Indigenous Nations.

1 Core LU

Room 221–222

Single Egress Buildings: The Key to the Missing Middle

Inge Roecker Architect AIBC, MRAIC

This session explores Single Egress Buildings: a simple shift in code that enables richly livable, small-scale multi-unit housing on infill lots. Through case studies, this session will examine how relaxing double-exit requirements can enable beautiful, human-scaled housing that bridges the gap between detached homes and high-rise living, advancing both affordability and community.

1 Core LU

Room 223–224

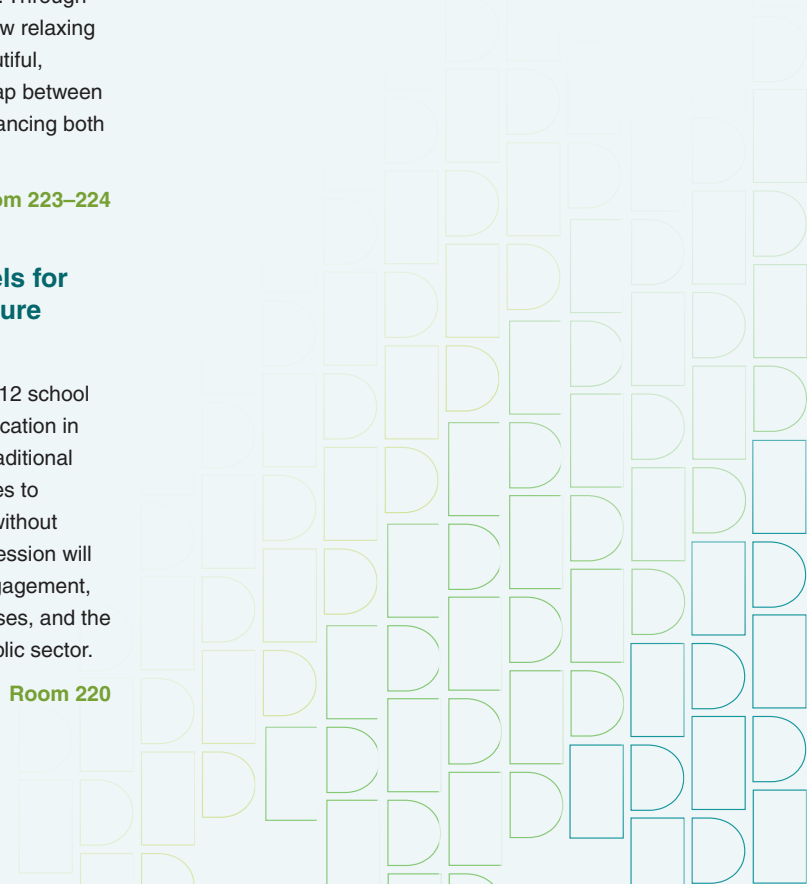
Evolving Project Delivery Models for Community-Centered Architecture

Lindsey Salter Architect AIBC

The Smith Campus project, the largest K-12 school project ever funded by the Ministry of Education in British Columbia, required rethinking of traditional project management and design processes to meet educational and community needs without compromising architectural values. This session will share practical lessons learned about engagement, communication, integrated design processes, and the shifting business of architecture in the public sector.

1 Core LU

Room 220



Thank You

To Our Generous Sponsors



KEYNOTE PRESENTATION SPONSORS



interiorTech



MOVIE NIGHT SPONSOR





EXHIBITORS

CASCADIA
WINDOWS & DOORS



CANADIAN PRECAST/PRESTRESSED CONCRETE INSTITUTE
INSTITUT CANADIEN DU BÉTON PRÉFABRIQUÉ ET PRÉCONTRAIT



LONGBOARD®
INSPIRING ARCHITECTURE

merlin
NOISE CONTROL

SHERWIN-WILLIAMS.



stackd
by DESIGNTIME



Tracktive



CONFERENCE SUPPORTER

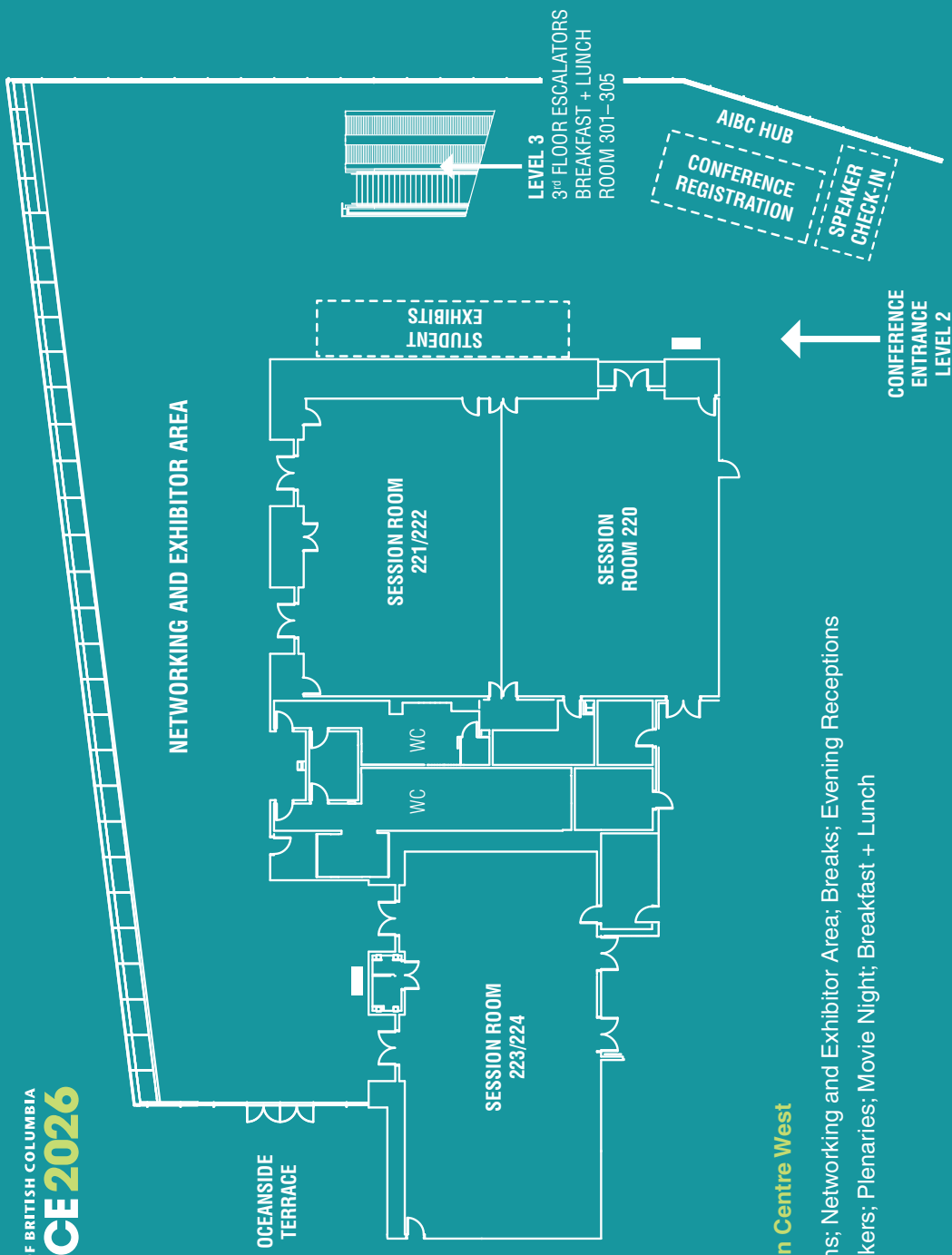
AXIS

People
Place
Possibility



ARCHITECTURAL INSTITUTE OF BRITISH COLUMBIA

CONFERENCE 2026



Vancouver Convention Centre West

Level 2: Session Rooms; Networking and Exhibitor Area; Breaks; Evening Receptions

Level 3: Keynote Speakers; Plenaries; Movie Night; Breakfast + Lunch